

BYLAW No. 3 - 2024

**A BYLAW OF THE RM OF SASMAN NO. 336 TO AMEND BYLAW
No. 02/2017 KNOWN AS THE OFFICIAL COMMUNITY PLAN**

A bylaw to amend Bylaw No. 02/2017 known as the Official Community Plan of the RM of Sasman No. 336.

The Council of the RM of Sasman No. 336, in the Province of Saskatchewan, enacts this bylaw to amend Bylaw No. 02/2017 as follows:

- 1. **The Future Land Use Map, referred to in APPENDIX A**, is amended by:
 - a. Redesignating from COUNTRY RESIDENTIAL TO URBAN MUNICIPALITY, all of that portion of LSD 6 & 11-21-33-11-W2M, identified as **Lot 9 - 11, Block 11, Lot 1 - 16, Block 12, Lot 1 - 3, Block 13, MR1, MR2, Jessie Street & Hunter Street**, as shown within the bold-dashed line on the plan of proposed subdivision, prepared by M.M. Vanstone SLS of 20/20 Geomatics, which is attached to and forms part of this bylaw as Schedule "A".
 - b. **This bylaw shall become effective on the date Bylaw 3-2024 is approved by the Minister of Government Relations.**

Reeve

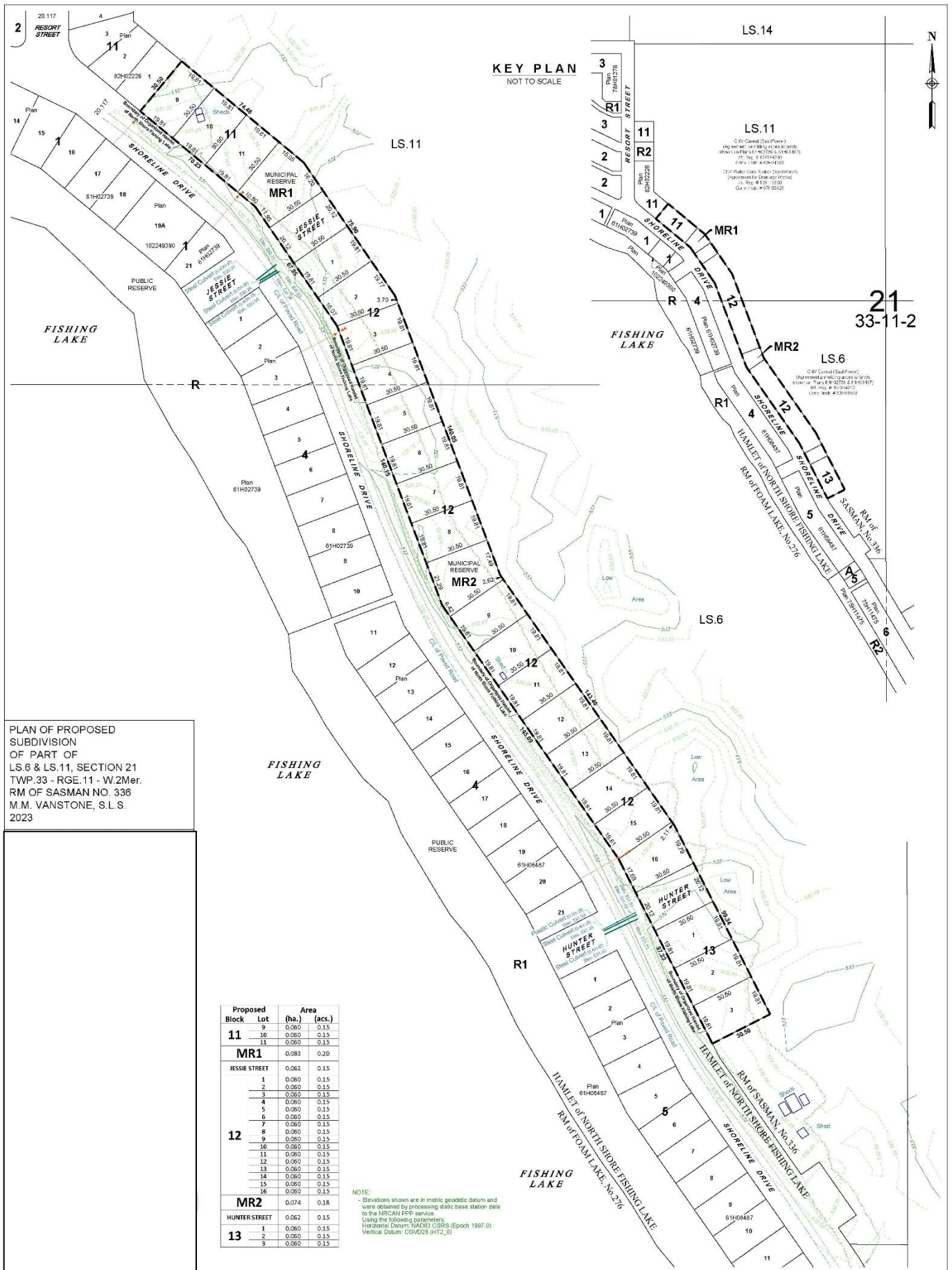
SEAL

Administrator

Certified a true copy of
Bylaw No. 3-2024 adopted by
resolution of Council this
13th day of August 2024.

Administrator

SCHEDULE "A" - Page 1
Bylaw 3-2024



PLAN OF PROPOSED SUBDIVISION OF PART OF LS.6 & LS.11, SECTION 21 TWP.33 - RGE.11 - W.2Mer. RM OF SASMAN NO. 336 M.M. VANSTONE, S.L.S. 2023

Proposed Block	Lot	Area (ha.)	Area (acs.)
11	9	0.060	0.15
	10	0.060	0.15
	11	0.060	0.15
MR1		0.083	0.20
	1	0.060	0.15
	2	0.060	0.15
	3	0.060	0.15
	4	0.060	0.15
	5	0.060	0.15
	6	0.060	0.15
12	7	0.060	0.15
	8	0.060	0.15
	9	0.060	0.15
	10	0.060	0.15
	11	0.060	0.15
	12	0.060	0.15
	13	0.060	0.15
MR2		0.074	0.18
	14	0.060	0.15
	15	0.060	0.15
13	16	0.060	0.15
	1	0.060	0.15
	2	0.060	0.15

NOTE:
- Elevations shown are in metric geodetic datum and were obtained by processing static base station data to the NRCAN PPS sensor.
Using the following parameters:
Horizontal Datum: NAD83 CSRS (Epoch 1987.0)
Vertical Datum: CGVD08 (HT2_0)